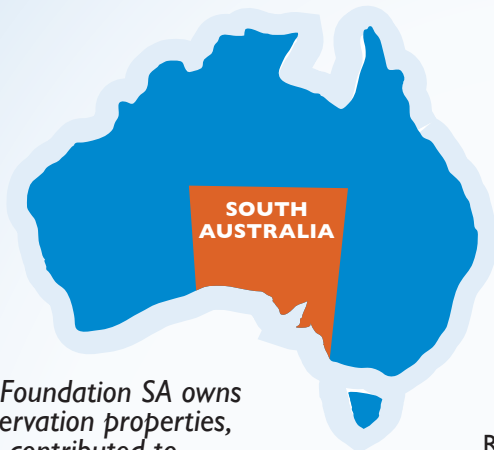
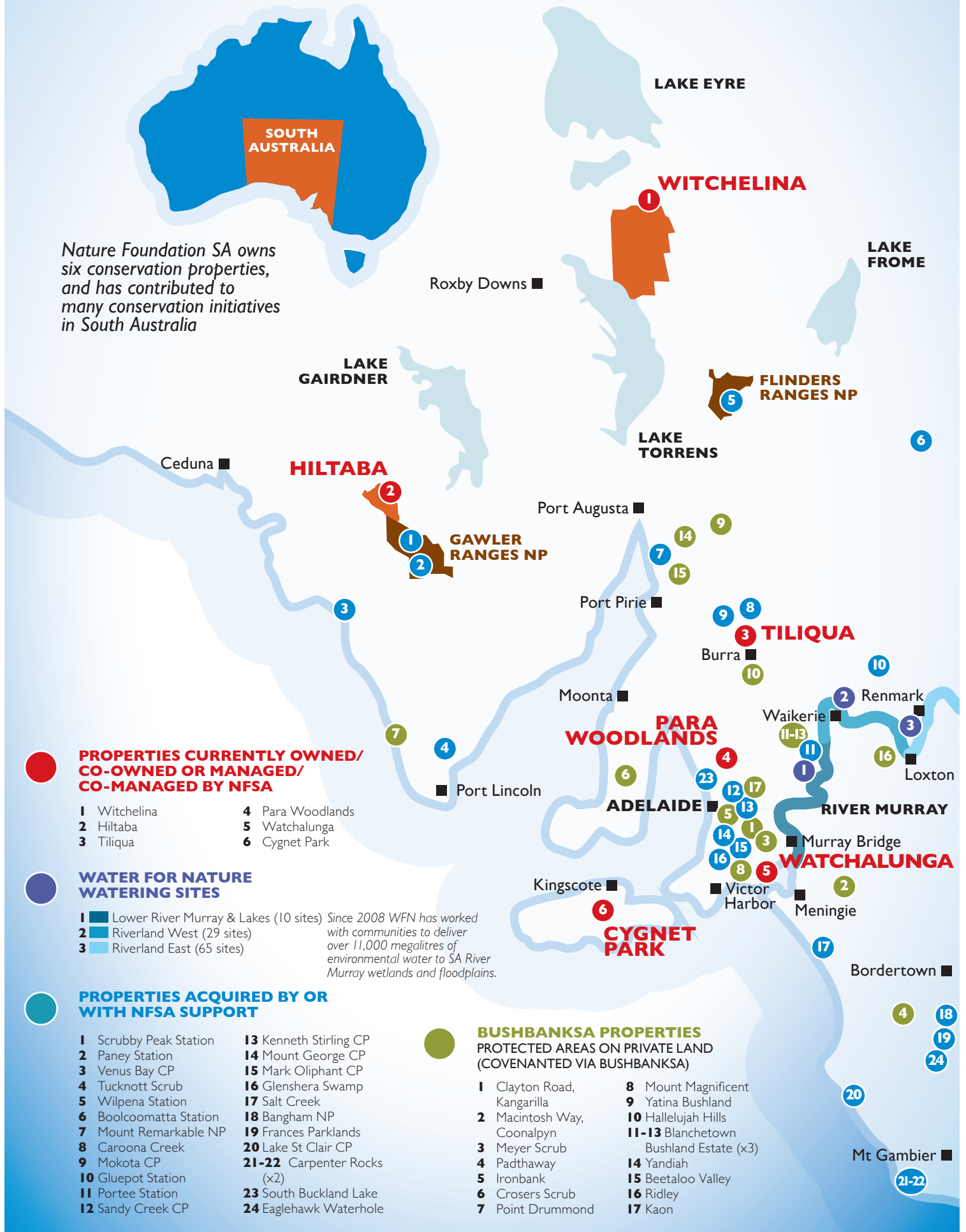


# OUR FOOTPRINT



Nature Foundation SA owns six conservation properties, and has contributed to many conservation initiatives in South Australia



## PROPERTIES CURRENTLY OWNED/ CO-OWNED OR MANAGED/ CO-MANAGED BY NFSA

- 1 Witchelina
- 2 Hiltaba
- 3 Tiliqua
- 4 Para Woodlands
- 5 Watchalunga
- 6 Cygnet Park

## WATER FOR NATURE WATERING SITES

- 1 Lower River Murray & Lakes (10 sites)
  - 2 Riverland West (29 sites)
  - 3 Riverland East (65 sites)
- Since 2008 WFN has worked with communities to deliver over 11,000 megalitres of environmental water to SA River Murray wetlands and floodplains.*

## PROPERTIES ACQUIRED BY OR WITH NFSA SUPPORT

- 1 Scrubby Peak Station
- 2 Paney Station
- 3 Venus Bay CP
- 4 Tucknott Scrub
- 5 Wilpena Station
- 6 Boolcoomatta Station
- 7 Mount Remarkable NP
- 8 Caroona Creek
- 9 Mokota CP
- 10 Gluepot Station
- 11 Portee Station
- 12 Sandy Creek CP
- 13 Kenneth Stirling CP
- 14 Mount George CP
- 15 Mark Oliphant CP
- 16 Glenshera Swamp
- 17 Salt Creek
- 18 Bangham NP
- 19 Frances Parklands
- 20 Lake St Clair CP
- 21-22 Carpenter Rocks (x2)
- 23 South Buckland Lake
- 24 Eaglehawk Waterhole

## BUSHBANKSA PROPERTIES PROTECTED AREAS ON PRIVATE LAND (COVENANTED VIA BUSHBANKSA)

- 1 Clayton Road, Kangarilla
- 2 Macintosh Way, Coonalpyn
- 3 Meyer Scrub
- 4 Padthaway
- 5 Ironbank
- 6 Crosers Scrub
- 7 Point Drummond
- 8 Mount Magnificent
- 9 Yatina Bushland
- 10 Hallelujah Hills
- 11-13 Blanchetown Bushland Estate (x3)
- 14 Yandiah
- 15 Beetaloo Valley
- 16 Ridley
- 17 Kaon